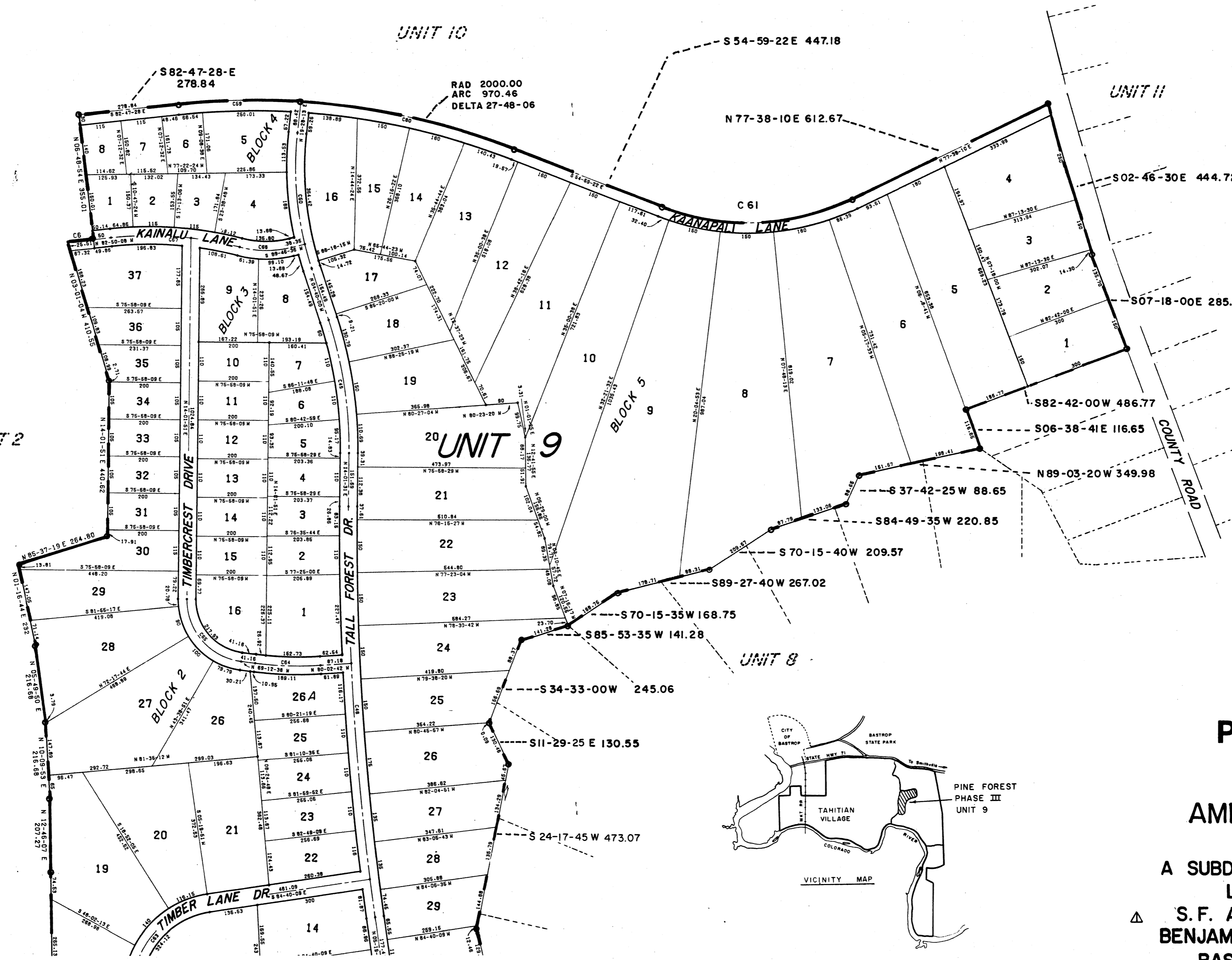
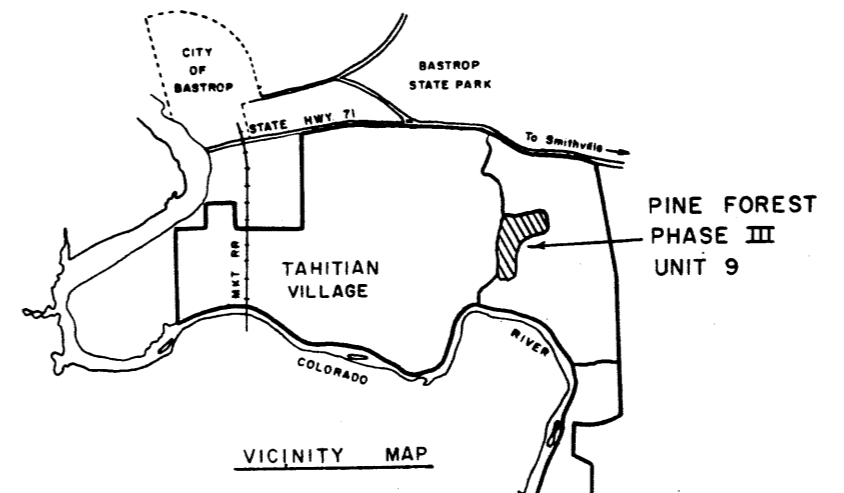


- GENERAL NOTES
- EXCEPT WHERE OTHERWISE NOTED, ALL STREETS ARE 50 FEET WIDE.
  - ALL CUL-DE-SAC RADI ARE 50 FEET.
  - THERE IS A 50 FOOT BUILDING LINE ADJACENT TO ALL STREETS AND CUL-DE-SACS.



CURVE DATA

STATION	PC	PVI	PT	CH	DELTA	CH BWD
1	532.00	544.84	558.25	14.52-21	23.22-52 E	
2	532.00	544.84	558.25	14.52-21	23.22-52 E	
3	532.00	544.84	558.25	14.52-21	23.22-52 E	
4	425.00	430.57	405.33	422.51	58-57-38 N	27-04-48 W
5	225.00	230.57	205.33	422.51	58-57-38 N	27-04-48 W
6	3155.00	305.85	31.69	31.89	001-18-00	18-37-59 W
7	2800.00	270.56	260.56	260.56	26-55-12 N	69-19-52 W
8	2400.00	230.56	220.56	220.56	22-55-12 N	69-19-52 W
9	2154.54	187.18	172.82	172.82	17-55-12 N	69-19-52 W
10	1900.00	150.56	140.56	140.56	14-55-12 N	69-19-52 W
11	1650.00	110.56	100.56	100.56	10-55-12 N	69-19-52 W
12	1400.00	70.56	60.56	60.56	6-55-12 N	69-19-52 W
13	1150.00	30.56	20.56	20.56	2-55-12 N	69-19-52 W
14	900.00	-10.56	-20.56	-20.56	2-55-12 S	69-19-52 W
15	650.00	-50.56	-60.56	-60.56	6-55-12 S	69-19-52 W
16	400.00	-90.56	-100.56	-100.56	10-55-12 S	69-19-52 W
17	150.00	-130.56	-140.56	-140.56	14-55-12 S	69-19-52 W
18	50.00	-170.56	-180.56	-180.56	18-55-12 S	69-19-52 W
19	0.00	-210.56	-220.56	-220.56	22-55-12 S	69-19-52 W
20	0.00	-250.56	-260.56	-260.56	26-55-12 S	69-19-52 W
21	0.00	-290.56	-300.56	-300.56	30-55-12 S	69-19-52 W
22	0.00	-330.56	-340.56	-340.56	34-55-12 S	69-19-52 W
23	0.00	-370.56	-380.56	-380.56	38-55-12 S	69-19-52 W
24	0.00	-410.56	-420.56	-420.56	42-55-12 S	69-19-52 W
25	0.00	-450.56	-460.56	-460.56	46-55-12 S	69-19-52 W
26	0.00	-490.56	-500.56	-500.56	50-55-12 S	69-19-52 W
27	0.00	-530.56	-540.56	-540.56	54-55-12 S	69-19-52 W
28	0.00	-570.56	-580.56	-580.56	58-55-12 S	69-19-52 W
29	0.00	-610.56	-620.56	-620.56	62-55-12 S	69-19-52 W
30	0.00	-650.56	-660.56	-660.56	66-55-12 S	69-19-52 W
31	0.00	-690.56	-700.56	-700.56	70-55-12 S	69-19-52 W
32	0.00	-730.56	-740.56	-740.56	74-55-12 S	69-19-52 W
33	0.00	-770.56	-780.56	-780.56	78-55-12 S	69-19-52 W
34	0.00	-810.56	-820.56	-820.56	82-55-12 S	69-19-52 W
35	0.00	-850.56	-860.56	-860.56	86-55-12 S	69-19-52 W
36	0.00	-890.56	-900.56	-900.56	90-55-12 S	69-19-52 W
37	0.00	-930.56	-940.56	-940.56	94-55-12 S	69-19-52 W



**PINE FOREST  
PHASE III  
AMENDED PLAT OF  
UNIT 9**

A SUBDIVISION OF 165.0718 ACRES  
LOCATED IN THE  
S.F. AUSTIN LEAGUE A-3 &  
BENJAMIN BOWLES LEAGUE A-14  
BASTROP COUNTY, TEXAS  
135 LOTS AND RESERVES

SEE SHT. 1 OF 3 - UNIT 9	2/79
DESCRIPTION	DATE